

## Wastewater Treatment Plant Expansion and IPC Lift Station Rehabilitation, Delphi, Indiana

Contract Entity: Board of Public Works,  
Delphi, Indiana

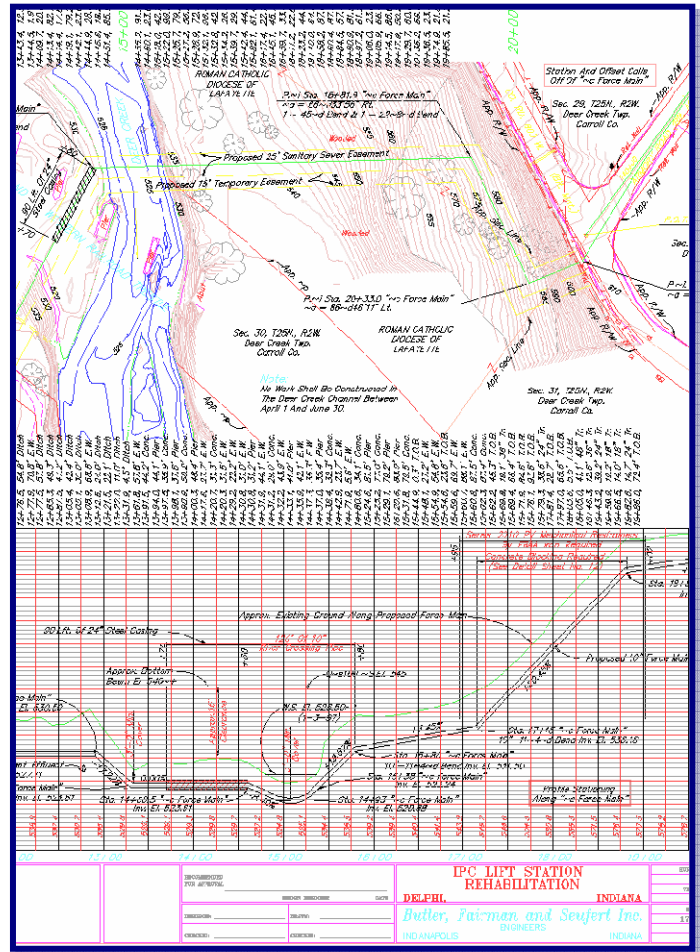
Construction Cost: \$420,000 Phase I Lift Station  
\$389,600 Phase II Interceptor  
\$3,650,000 WWTP Expansion

Team Involvement:

John Brand, P.E., Project Manager  
Amy Moore, P.E., Project Engineer  
Gary L. Pohl, P.E., Construction Services Mgr.  
Mark W. Neal, L.S., Survey Services

Contact Information:

Mr. Richard VanSickle, Superintendent  
Wastewater Treatment Plant  
2251 North State Road 25  
Delphi, IN 46923  
Telephone: 765-564-2313



Summary: Rehabilitation of existing lift station to provide pumping directly to the Delphi Wastewater Treatment Plant. Variable speed pump control and installation at 7,500 feet of 10-inch force main. Force main route included railroad crossing, river crossing, and vertical profile with over 90 feet of vertical elevation drop and 40 feet of vertical rise. Conveyed wastewater was high-strength hog processing waste with significant sulfide generation and odor. Air/vacuum control and odor control were important elements of the design and construction. Improvements were sequenced to provide a maximum shut-down period of 8 hours for IPC operations which required elaborate phasing requirements as part of the Contract Documents.

WWTP improvement included expansion of City wastewater system to accommodate a large hog processing facility. High strength wastestream is treated with extended aeration process with anoxic basin (Eimco Carrousel).