

Rosewood Lane Sanitary Sewer, Tipton, Indiana

Contract Entity: City of Tipton
Board of Works

Construction Cost: \$79,000.00

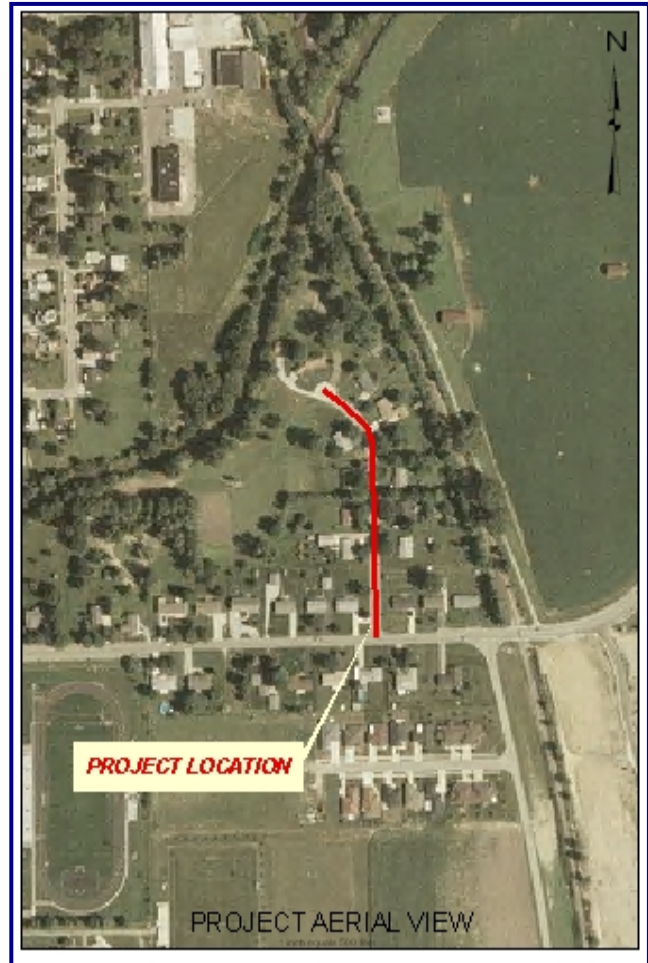
Engineering Cost: \$14,950.00

Team Involvement:

David Lahey, P.E., Project Manager
Amy R. Moore, P.E., Project Engineer
Gary L. Pohl, P.E., Construction Services Mgr.
Mark W. Neal, L.S., Survey Services

Contact Information:

Mr. Tom Spay
Water Department
City of Tipton
P. O. Box 288
Tipton, IN 46072



Summary:

The City of Tipton annexed an adjacent unsewered area, and agreed to provide sanitary sewer service. The project involved 665 feet of 8 inch diameter sewer. Challenges associated with the project included an evaluation of alternative alignments and an extremely shallow sewer reach that was constructed using ductile iron pipe. The benefit of the final design was that it involved a cost effective single mainline pipe solution in, or adjacent to, the street, whereas, a more expensive dual pipe solution in the rear yards had been considered.